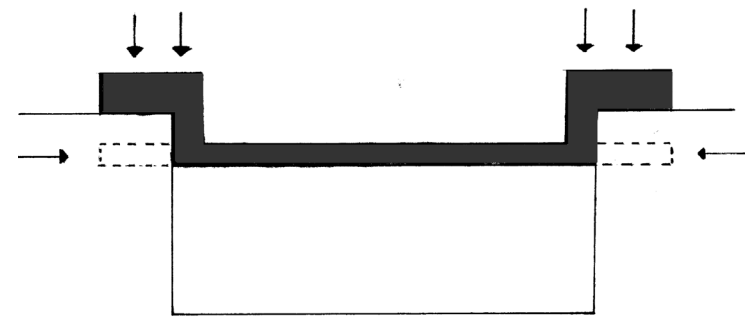


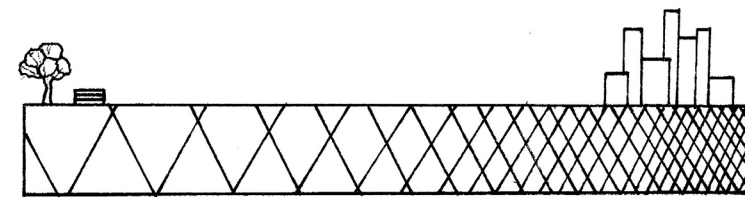
Figure Constructive Charrette
Two-week collaborative project
Fall 2012 / Versailles, France



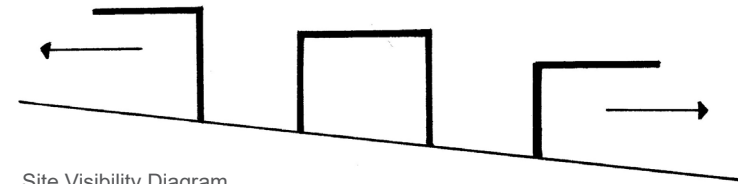
Existing Site Photograph



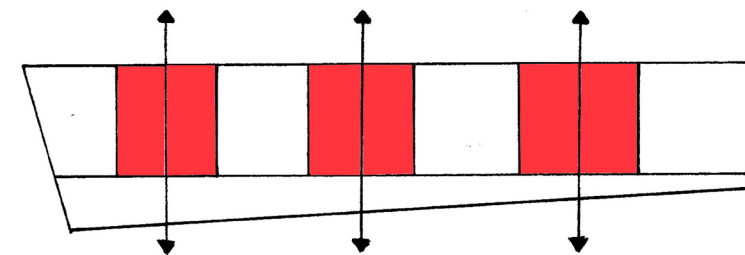
Structural Load Diagram



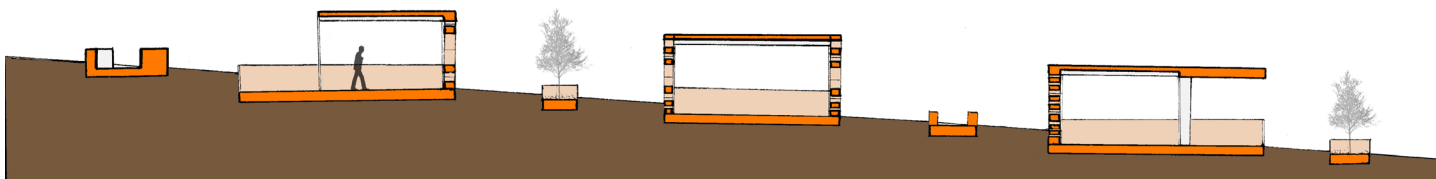
Environmental Density Diagram



Site Visibility Diagram



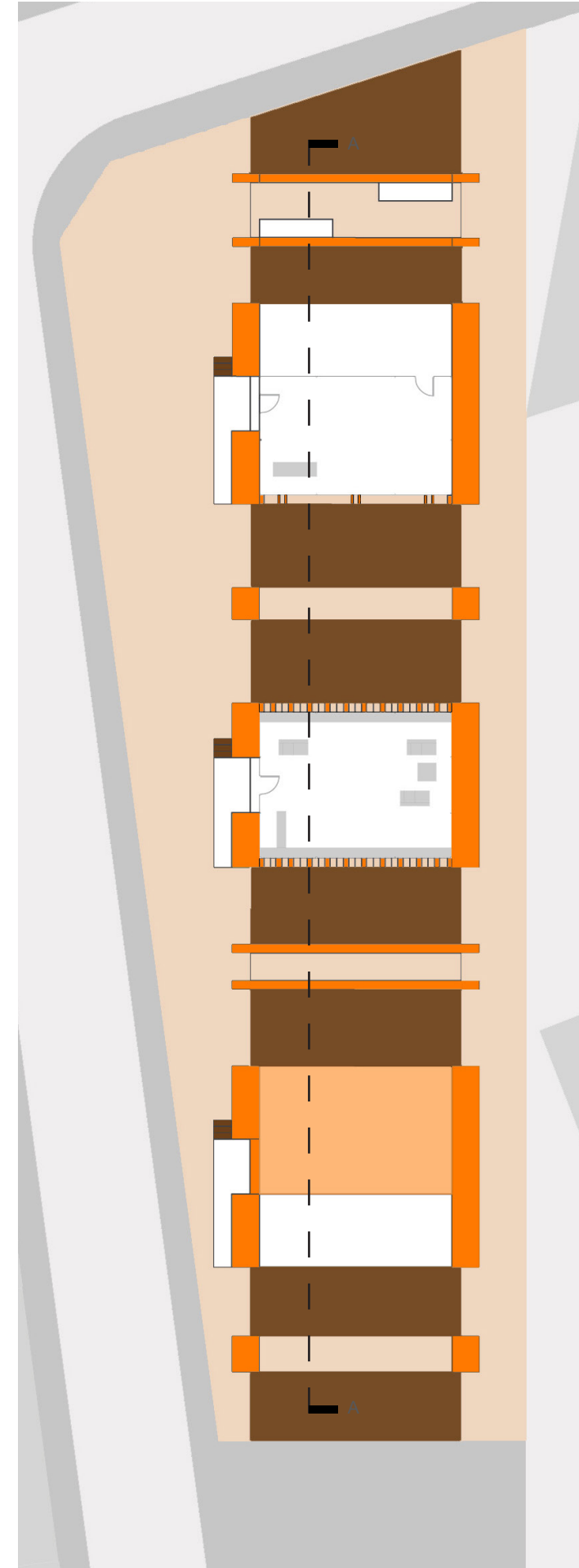
Site Circulation Diagram



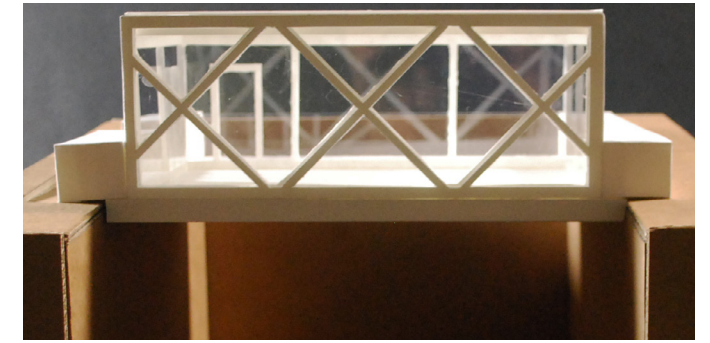
Section A-A

The Figure Constructive Charrette was a collaboration with Floriane Bignon, Juliette Lefrançois, Clara Pineda, Camille Poëzévara, and Pauline Zamaron from the École Nationale Supérieure d'Architecture de Versailles. The project involved taking the concept of franchissement, bridging over, and applying it to the existing site at the Jardin de la rue de l'Amiral-Mouchez, an abandoned sunken railroad passage on the eastern edge of Le Parc Montsouris in the 14th arrondissement of Paris.

The design considered creating a center for the local community, contextualized in its massing by the surrounding neighborhood. The three buildings spanning the sunken garden incorporated public gallery space, a small community library, and a cafe, shifting in programmatic transparency in coordination with the gradient of the rural park to the urban city center. Additional lateral circulation was provided through the buildings while maintaining a minimal intervention to the natural park.



Floor Plan



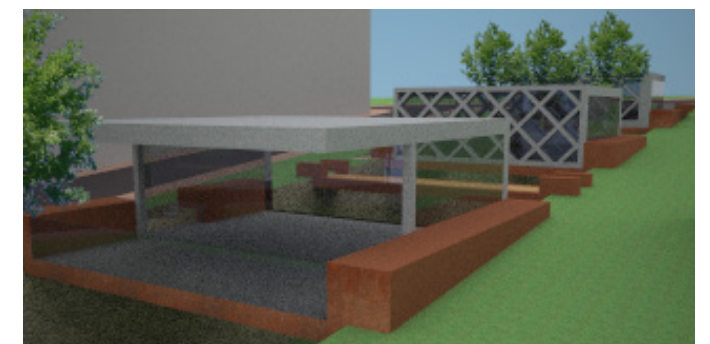
Model Photograph



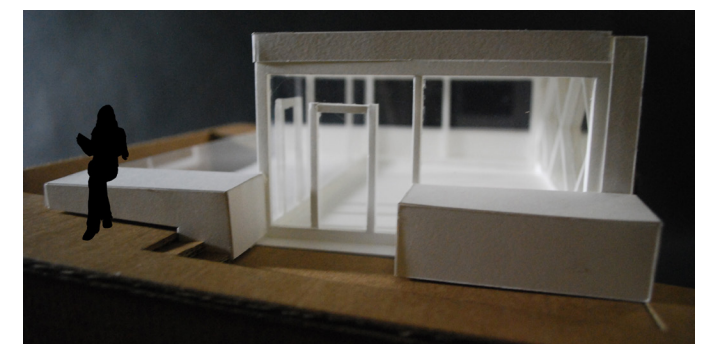
Site Exterior Render



Model Photograph



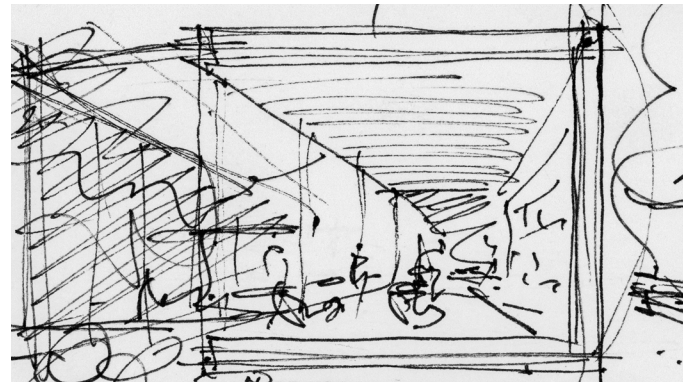
Site Exterior Render



Model Photograph

Review and critique of Figure Constructive Charrette

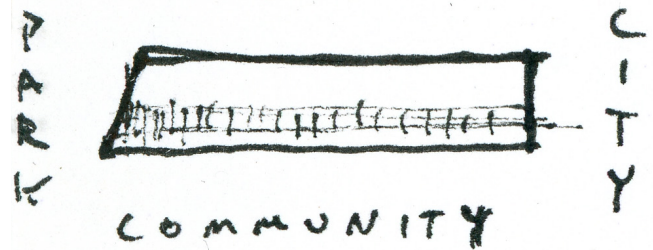
This project was educational towards successful collaboration across multiple cultures in a strict time frame. Similar to the previous collaborative charrette with the Jumieges project, this study focused on an overarching concept for an existing context rather than developing feasible, accurate details. While the conceptual aspects of our design were successful in articulating the assignment, the formal aspects of the design were lacking refinement and could have been developed to a greater degree.



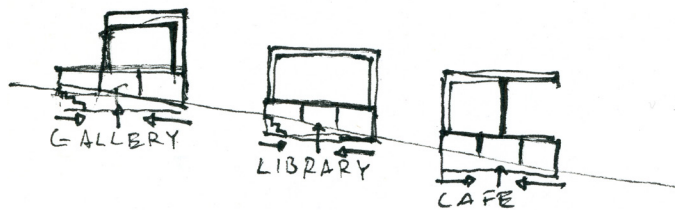
Process Sketch



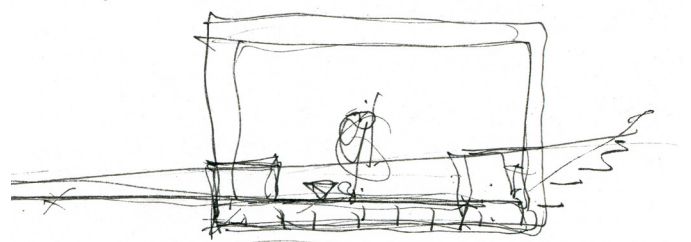
Process Sketch



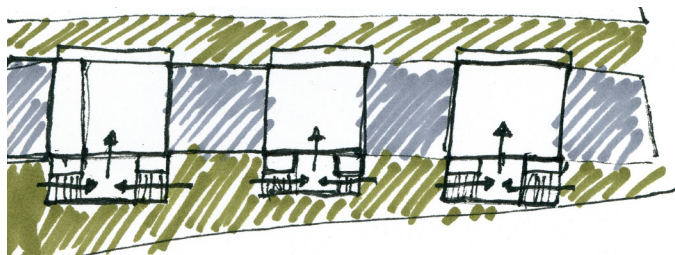
Process Sketch



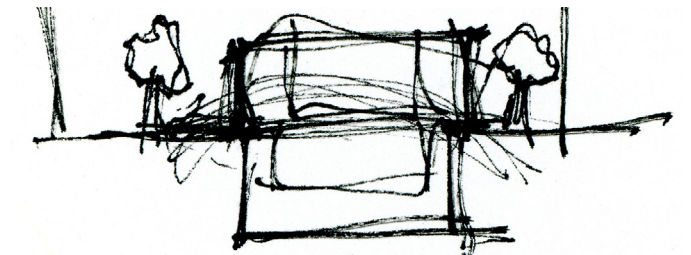
Process Sketch



Process Sketch



Process Sketch



Process Sketch



Model Photograph



Process Sketch